

ANY TIME!

OrbitPost Sentinel

ANY WHERE!

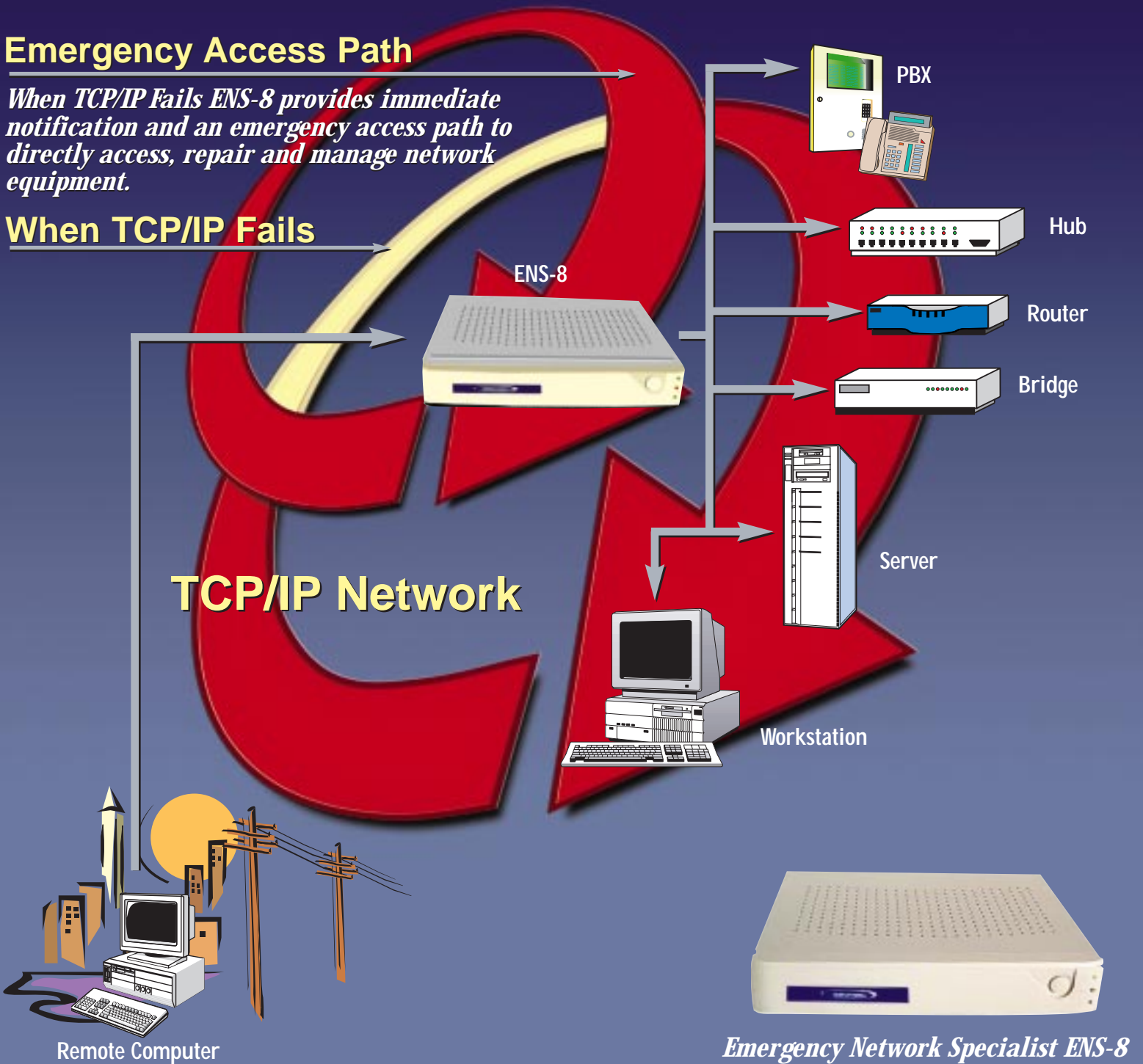
SRENA

Secure Remote Emergency Network Administration

Emergency Access Path

When TCP/IP Fails ENS-8 provides immediate notification and an emergency access path to directly access, repair and manage network equipment.

When TCP/IP Fails



Remote Computer

Emergency Network Specialist ENS-8

OPS is the leader in (SRENA — Secure Remote Emergency Network Administration) for OBM and remote console management technologies. ENS-8 is a Fire-escape for your network, providing an **Alternate Access Route** when the network is down.

Featuring:

- Port Commander for network and remote port and device management.
- Secure Web Browser Interface for easy administration.
- Secure Sentinel 128 bit encryption (SSHv3), PAP/CHAP and IP Packet Filtering
- Industry's largest nonconnect port buffers with Replay and Keyword search utilities for Auditing and Troubleshooting.
- LSS Life Signs Sentinel Monitors the life signs of your network servers and intelligent devices, sounding an alarm and paging and emailing notifications at the first signs of trouble.
- EAdmin — Emergency email notifications, saved configurations, settings and port histories.

The Emergency Network Specialist (ENS-8)

Improving Productivity While Reducing Costs — The ENS-8 From OutPost Sentinel

Do More With Less

Businesses increasingly rely on computers, and when the network is down, your business is down. OutPost Sentinel's ENS-8 is a Secure Remote Emergency Network Administration (SRENA) solution designed for improving network uptime and business productivity. The Emergency Network Specialist (ENS-8) gives your business or branch offices access to a dedicated network specialist, monitoring your network equipment twenty-four by seven. Get immediate notification and secure access to address potential computer related issues before they become a business problem. ENS-8 takes you directly to the problem source at **Any Time**, from **Any Where!**

The ENS-8 manages devices through the TCP/IP network, and more importantly, the ENS-8 provides a secondary emergency access path, allowing you to manage devices without going through the network. Often, a network element will go down and bring all network traffic and communication to a halt. The ENS-8 provides Out-of-Band Management (OBM) and access to network devices — even when the network is down!

Maximize IT Coverage and Minimize IT Costs

For offices with a resident or onsite MIS professional, the "Specialist" (ENS-8) provides manageability, improving network uptime and efficiency. ENS-8 is always on, watching your network every minute of every day. In the event of a problem, it alerts you and immediately directs you to the device in question — eliminating guesswork. Technicians can now monitor multiple networks from a central site or remote location, increasing the technical expertise available to remote sites. Often even trained individuals lack the skills to address many network related issues. For example, a network router failure will render the network and in-band management devices useless. However, if connected to the ENS-8, the failed

The ENS-8 Advantage

- Reduce IT Costs
- Eliminate Downtime
- Maximize IT Coverage
- Improve Service
- Increase Productivity
- Maximize Profits

router could be repaired, reconfigured and rebooted remotely. In the less likely event of a hardware failure, the ENS-8 can still be used to take the impedance off the network and reroute the traffic. Get the **Right Expert**, to the **Right Location, Right Now!**

Optimize Network Resources

The ENS-8 is ideal for smaller network installations and will manage 8 mission critical devices. Network problems are eliminated without going onsite, reducing downtime, travel costs and improving the efficiency of scarce network resources.

Centralized Management

For larger installations, gain Centralized Management Control of 8 devices per ENS-8 and additional devices by connecting multiple ENS-8s to one ENS-8 box configured as Master. Or for very large rack solutions, graduate to the 1U rack Cyber Command Center (CCC) 16, 32 or 48 port unit solutions.

Securely Manage Network Devices

The ENS-8 provides simple and robust Secure Remote Emergency Network Administration with a comprehensive suite of software and management tools. PORT COMMANDER makes managing ports and devices easy from anywhere. SECURE SENTINEL allows secure access and administration with built-in comprehensive security options, including full SSHv3 128 bit encryption, dial back, IP packet filtering and NAT. LIFE SIGNS SENTINEL (LSS) will monitor mission critical devices and automatically take action and notify administrators about specific events. EADMIN supplies you with an array of email utilities.

Administration and Audit Management Tools

The ENS-8 offers enhanced administration options such as 4 Megabit Nonconnect Port Buffering that displays an audit trail for quickly troubleshooting network devices. The Tab Completion Command Interface allows quick and easy configuration and scripting of multiple commands. The PORT COMMANDER assigns descriptive port names and numbers, simplifying port location and administration.

Maximize Productivity and Eliminate Downtime

The ENS-8 high performance SRENA servers are designed with the most comprehensive suite of OBM features available. PORT COMMANDER allows remote or centralized control of servers and intelligent network devices. Both in-band, public network access and an emergency alternate access path through a serial route to manage devices. The ENS-8 gives administrators the power to securely administer, troubleshoot or reconfigure devices such as routers, switches or servers.



PORT COMMANDER

Access and More - True Management:

Take command of your ports and devices with PORT COMMANDER software. Port Commander technology provides port management and

secure, remote, out-of-band management of IT devices from anywhere in the world.

The ENS-8 Port Commander allows Easy Configuration and Administration of ports and devices. Use OPS powerful but easy to use web browser or tab completion command to quickly set up the unit and to run preset tasks.

Port Commander enhances

- Manageability with Port Numbering and Device Naming.
- Troubleshooting has never been easier with Non-connect Port Buffering, providing a complete Audit History featuring actual port Replay and a Keyword Search.
- Unit status information and Device Statistics, providing an instant view of activities and the hardware for quick repairs.
- Save and restore settings and email configurations utilizing the EAdmin features.

Use Port Commander to configure devices and enable "in-rack" flash upgrades and customization.

ENS-8 supports TCP/IP (10/100 Base T), Dedicated Console, KVM Access, DHCP, NAT, Telnet, Reverse Telnet, SLIP/PPP, PTPP, VPN, FTP, TFTP, RSH Routing, Dial Up Modem, Dial Back Modem and USB Connectivity.

Use the Port Commander Web Browser to easily manage and administer network devices (See picture below).



MONITORING WITH LSS

The ENS-8's Life Signs Sentinel (LSS) provides perpetual monitoring of critical devices. LSS supplies event triggers that will notify you of changes in status within

selected network equipment. LSS will then notify you using a built-in audio alarm, a pager or by email.

LSS reduces investigation time by taking you straight to the problem device.

- Immediate Notification of Potential Problems
- View Port Statistics
- Heart Beat Monitoring
- Audio Alarm, Email or Paging Notifications



SECURE SENTINEL

OPS is the leader in SRENA technology, providing secure local and remote management of network devices through Secure Shell (SSHv3) protocol with 128 bit encryption for the transmission of

sensitive data. For added security, Secure Sentinel allows custom key lengths to make it virtually impossible to decipher data packets.

- Best and Most Recent Security Technology
- Block and Screen Unwanted Packets
- See Who has been Accessing your Network
- Regulate All Port Activity
- Authorizations and Permissions
- 128 bit SSHv3 Encryption
- IP Packet Filtering
- Dial Back Communications

Summary

The OPS ENS-8 enables IT managers to troubleshoot, reboot and reconfigure intelligent devices through the network or out-of-band through the console port.

The EAdmin command allows you to email yourself event logs, giving you a more in depth review of port traffic.

Audit Trail

The ENS-8 buffers up to 4 MB of console history for viewing problem identification and error codes. Rather than being limited to addressing symptoms, the IT manager is taken right to the heart of the problem. ENS-8 Network Specialist gets the expert network specialist to the emergency site.

Benefits

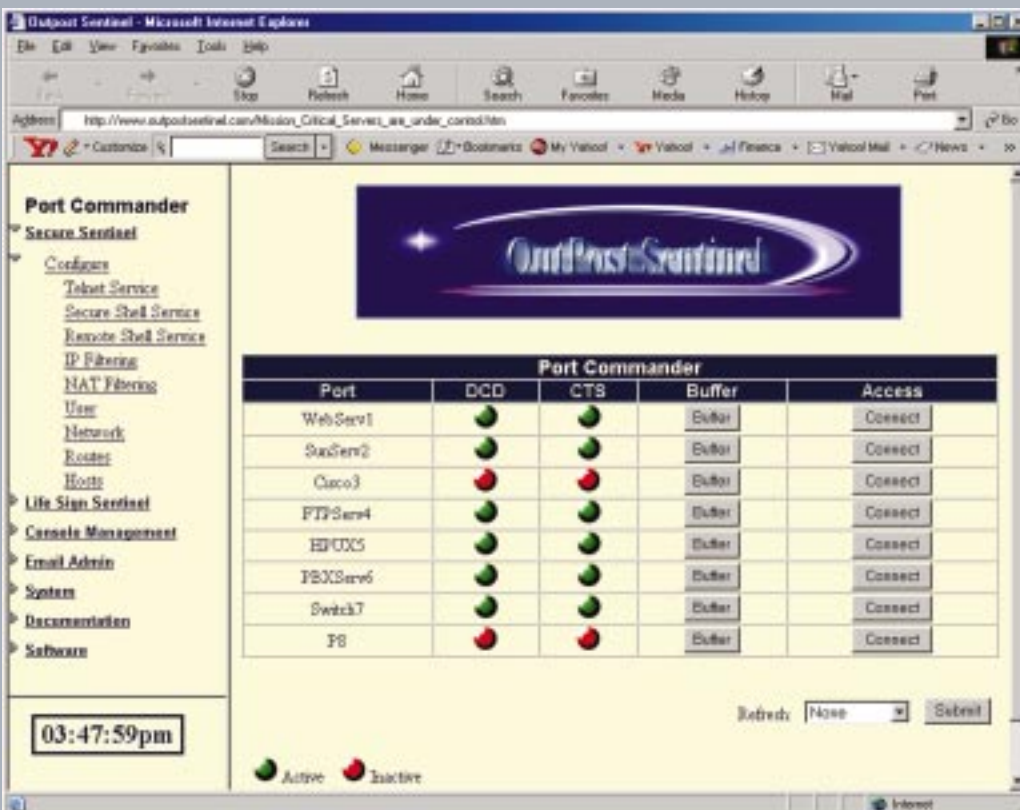
Troubleshoot and power up/down your intelligent devices remotely. Reduce your IT costs while improving your IT coverage, service and productivity. Eliminate downtime and maximize the profit potential of your business.

Specifications

Processor: 300 MHz
 Memory: 128 MB of RAM
 32 MB of Flash Memory
 1 LAN 10/100 Base T Ethernet Connection
 2 USB Connectors
 Size: 11.5" L x 8.5" W x 2" H
 Weight: 5 lbs
 8 High speed Serial Console Management Ports
 2 ENS-8 Console Control Ports
 VGA with CRT Connector
 1 Audio (alarm) Port
 Heat Sink & Cooling Fan
 60 Watt Power Supply
 Standard RJ-12 Model
 (RJ-45, DB-9 and DB-25 Models Available).

Compliance

FCC Class A, Ce, UL, cUL



EMERGENCY NETWORK SPECIALIST (ENS-8)

Having a specialist on your network gets the **Right Expert**, to the **Right Location, Right Now!**

CALL US TODAY!
(678)-867-9957

OutPost Sentinel
P.O. Box 2153
Alpharetta, GA 30023
www.outpostsentinel.com

Use the Port Commander Web Browser to easily manage and administer network devices.

FEATURE	PRODUCT		BENEFIT
	ENS-8	CCC-16/32/48	
SECURE SENTINEL SECURITY			Best and Most Recent Security Technology
SSHv3	X	X	Block and Screen Unwanted Pockets
IP Packet Filtering	X	X	
Remote Shell	X	X	See Who Has Been Accessing Your Network
Dial Back	X	X	
PAP & CHAP	X	X	Regulate All Port Activity
Secure Authentication	X	X	
Secure Remote Dial in	X	X	Secure Web Browser Interface
SSL Browser	X	X	
In Rack Login Screen	X	X	Manage Through the Network
NETWORK PROTOCOLS			Direct and Remote Console Management
TCP/IP (10/100 Base T)	X	X	
Reverse Telnet	X	X	KVM Support
Dedicated Console	X	X	
RSH	X	X	High Speed Private Network Routing
KVM Access	X	X	
DHCP Client	X	X	Secure Remote Management
10/100 Ethernet (2nd Port)	X	X	
SNMP	X	X	High Speed Network Downloads
NAT	X	X	
PPP, PPTP, VPN	X	X	Secondary Emergency Access Route
TFTP	X	X	
			Get the Experts to the Emergency Site
Remote Console Access			
Dial Up Modem Support	X	X	Easy to Configure and Use
Dial Back Modem Support	X	X	
USB & 10/100 Base T Connections	X	X	Troubleshoot Key Word Search and Audit Trail
DHCP Client	X	X	
PPTP, VPN	X	X	Secure Web Access
KVM & OBM Ports	X	X	
Multiple Simultaneous Users	X	X	Name and Locate Devices
PORT COMMANDER			Manage All Critical Devices
Console Management	X	X	
Max Ports or Devices	8	48	In Rack Upgrades and Customization
Tab Command Completion	X	X	
Graphical Configuration	X	X	Email Port History and Configurations
Console Syslog	X	X	
Non-connect Port Buffering	X	X	Emergency Email Notification
Stored Configurations	X	X	
SSL Http Access	X	X	Email to Store Configuration and Port Naming
Port Numbering	X	X	
Port Naming	X	X	Perpetual Monitoring of Equipment Vital Signs
Device Locator	X	X	
Master Control Unit	X	X	Immediate Problem Notification
Flash Upgrade	X	X	
Highest Port Density (1U)	X	X	Audio Alarm and Paging
EADMIN			Optional DC Power Available
Email Notification	X	X	
Email System logs	X	X	Cable and Accessories Available
Email Configuration	X	X	
			Manage Power Locally or Remotely
LIFE SIGNS SENTINEL (LSS)			
Heart Beat Monitoring	X	X	
Alarms	X	X	
Email Notification	X	X	
Dial & Paging Notification	X	X	
System and Port Statistics	X	X	
Optional Accessories			
DC Power Supply	NA	X	
DB-9 Cable Connection	X	X	
RJ-45 Cable Connection	X	X	
DB-25 Cable Connection	X	X	
Intelligent Power Management	X	X	

OutPost Sentinel • P.O. Box 2153 • Alpharetta, GA 30023 • Telephone (678)-867-9957 • www.outpostsentinel.com

ANY TIME!



ANY WHERE!